



Fresno County Rural Transit Agency

Microgrid/Resiliency Hub Feasibility Study

Advisory Committee Meeting #1, July 26, 2022

Agenda

3:15 – 3:25 – Welcome and introductions

3:25 – 3:45 – Background information

- FCRTA service area and the transition to electric vehicles and infrastructure
- Microgrid Feasibility Study goals and objectives

3:45 – 4:10 – Resiliency hub site identification brainstorming

- Criteria brainstorm
- Brainstorm locations (specific locations) to develop a list of potential sites

4:10 – 4:25 - Public outreach plan

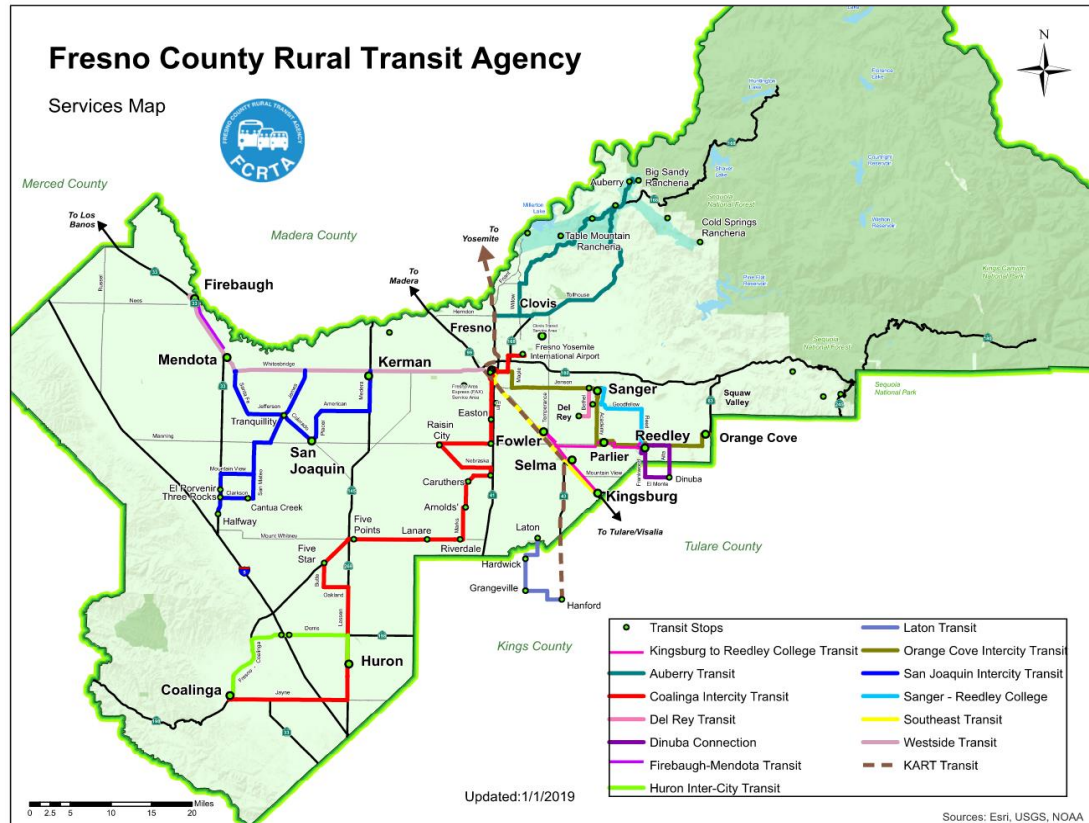
- Review outreach plan
- Mapping to identify community events/popup locations, how can we work with your existing events?
 - Volunteers to support community notices, etc.
- Community survey
 - Support for distributing community survey
 - Other events we can coordinate to garner additional community input

4:25 – Next steps

4:30 - Adjourn

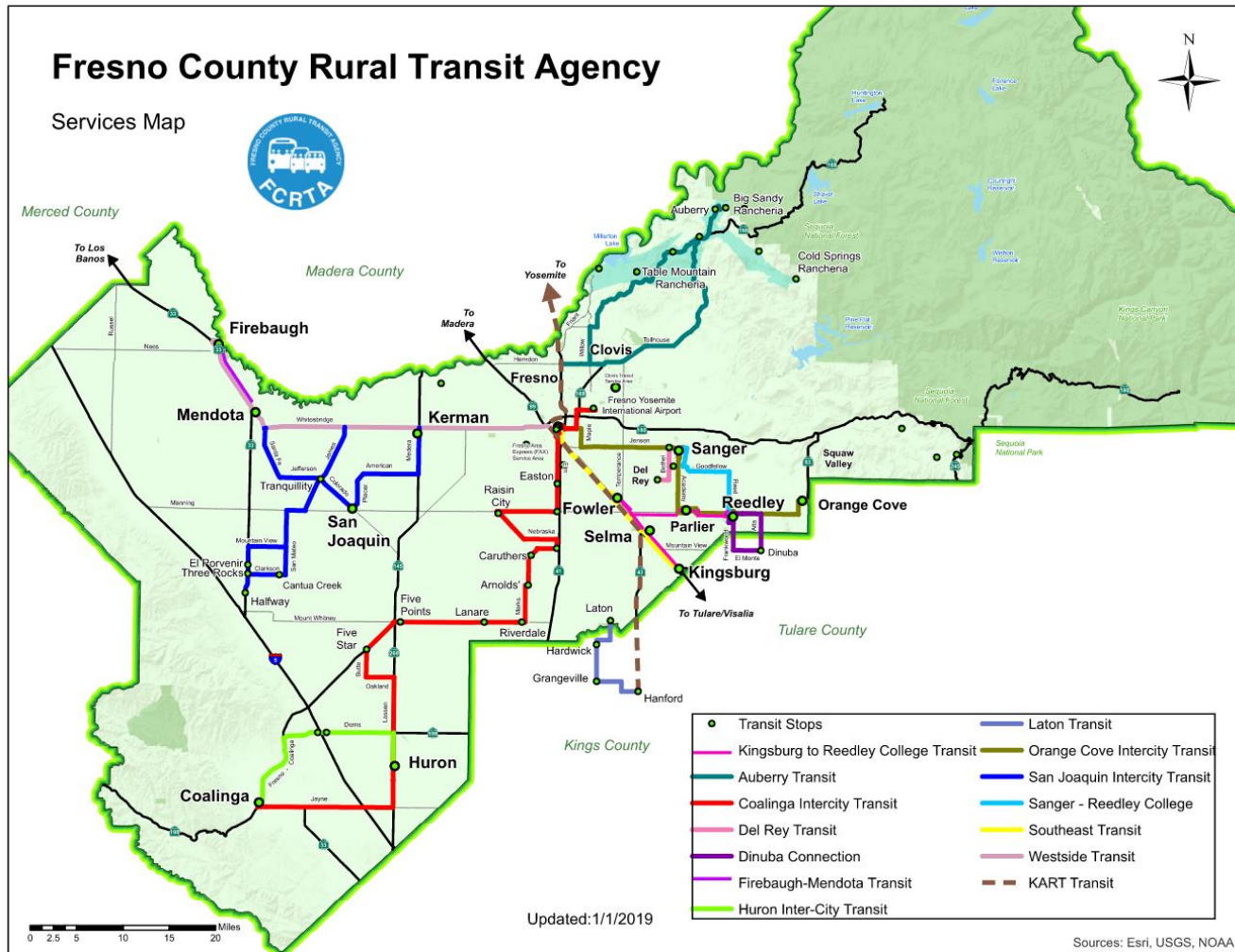
Fresno County Rural Transit Agency

- Serves rural communities of Fresno County
- Intra-city demand response
- Inter-city fixed-route service
- Rural Transit dial-a-ride service
- 13 incorporated cities
- 39 unincorporated communities
- Disadvantaged areas



Fresno County Rural Transit Agency

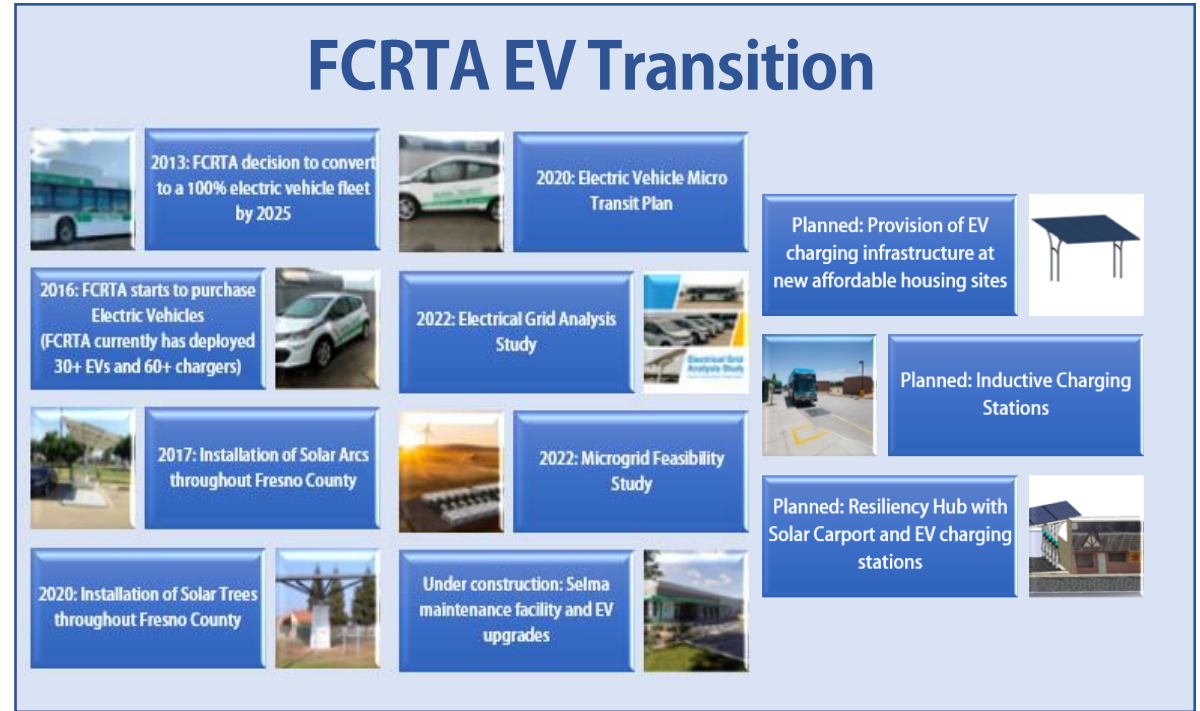
Services Map



Transition to Electric Vehicles

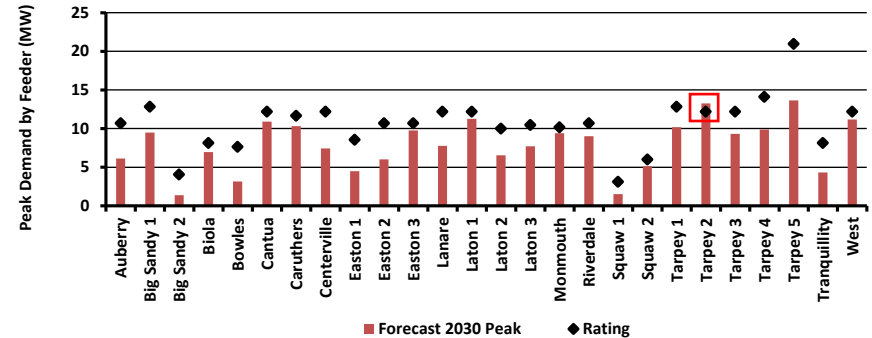
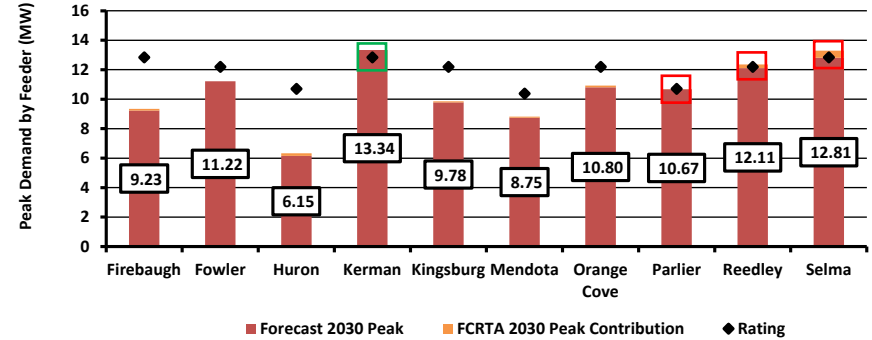
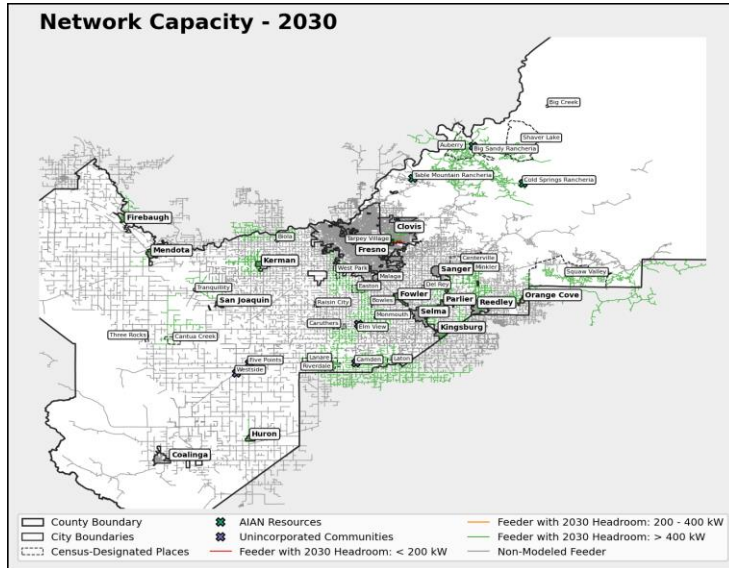
Accessible EV Mobility & Infrastructure For All

- Public agencies limited to purchasing zero emission buses by 2029
- FCRTA has goal of 100% EV by 2025



FCRTA Grid Integration Study

- *Study identified potential constraints*
- *This project will update the analysis and develop electrification pathway*



Electric Vehicle Microtransit Plan

- Conducted extensive community outreach with social services organizations
- Conducted origin/destination analysis
- Recommended implementation of EV Micro Transit service

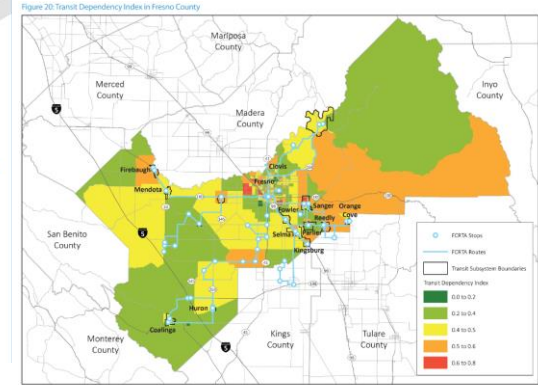
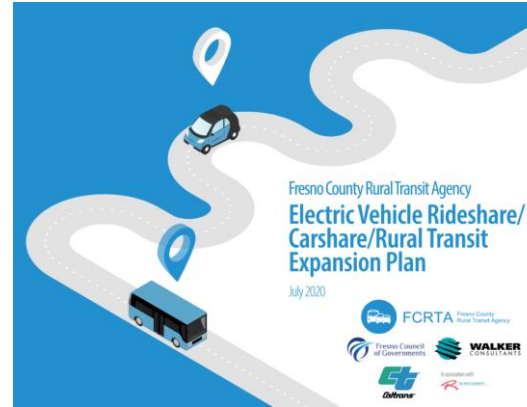
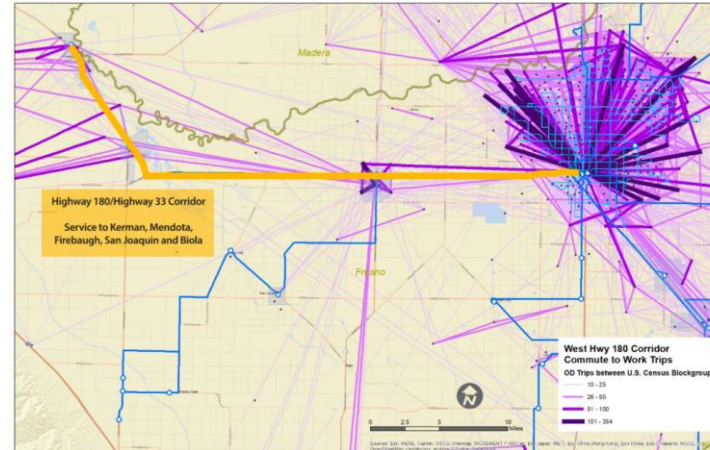


Figure 10: Hwy 180/Hwy 33 Corridor – East County Service Area



What is EV Microtransit Service?



- Loosely defined corridors
- On-demand service
- Rides can be booked ahead of time via mobile app or calling in
- Hire local drivers
- Operated using Electric Vehicles
- Service to healthcare or social services appointments, job training, shopping, etc.



Pilot EV Microtransit Service

- Piloted service in communities of Biola and West Park





LIVE IN BIOLA? GET A RIDE!

REV-UP PROGRAM: AFFORDABLE RIDES + CLEANER AIR!

Take advantage of our new electric ride service for Biola residents. If you need transportation into the Fresno-Clovis Metropolitan area, give us a call! Rides are offered on a first-come, first-serve basis using a Chevy Bolt electric vehicle.

SCHEDULE:
Monday - Friday
8:00am - 5:00pm

FARE / COST:
\$6 Round Trip to Kerman
\$10 Round Trip to Fresno/Clovis

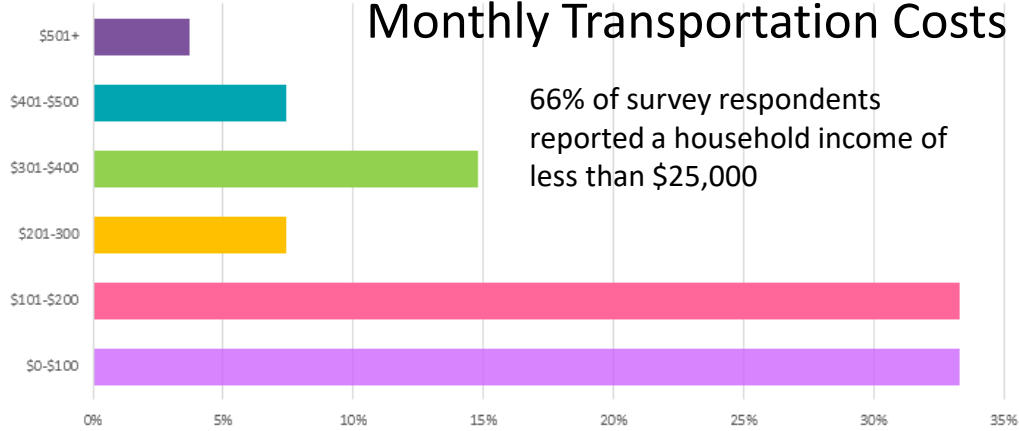
GET A RIDE:
1-800-425-1524
itransportev.com



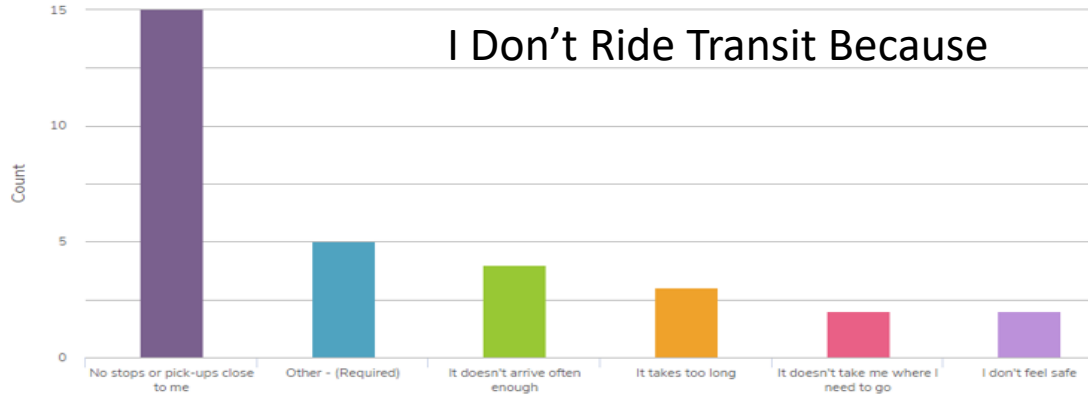
**\$6-\$10
ROUND TRIP**
\$6 to Kerman
\$10 to Fresno/Clovis
1-800-425-1524

Sustainable Transportation Services for the San Joaquin Valley
Inspiration Transportation | Fresno, CA | 1-800-425-1524 | itransportev.com

Monthly Transportation Costs



I Don't Ride Transit Because



JOIN US FOR

Transportation & Tacos

August 17th 5PM – 7PM
Biola Chamber of Commerce
12535 G Street
Food and Beverages will be served

Tell us about your transportation needs for a taco and a chance to win a gift card!

TAKE THE SURVEY
<https://survey.alchemer.com/s3/6075034/biola-eng>

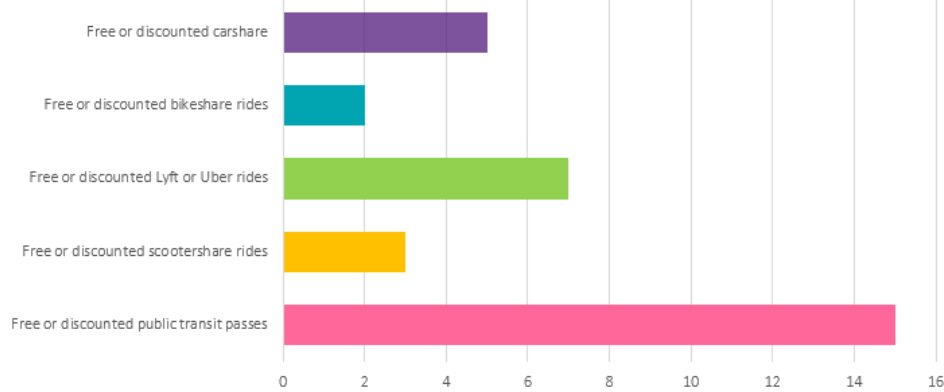
English Survey Spanish Survey Hmong Survey



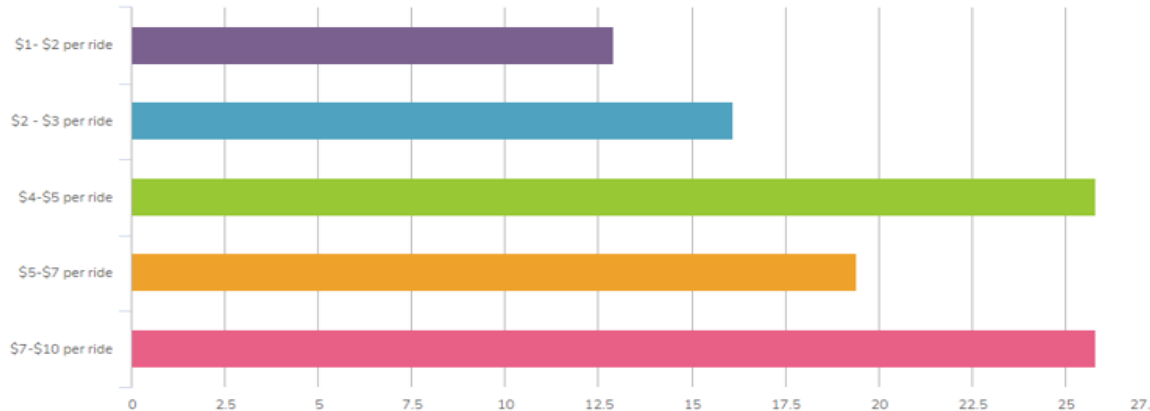
FCRTA Fresno County Rural Transit Agency



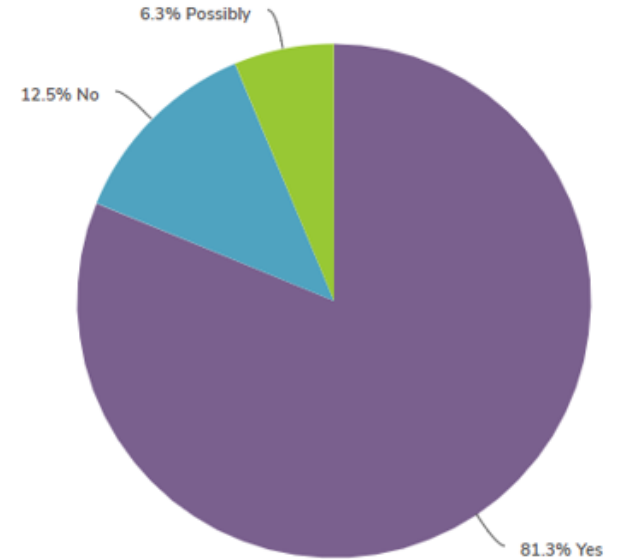
Interest in Travel Options



Willing to Pay Per Ride



Interest in Shuttle Service



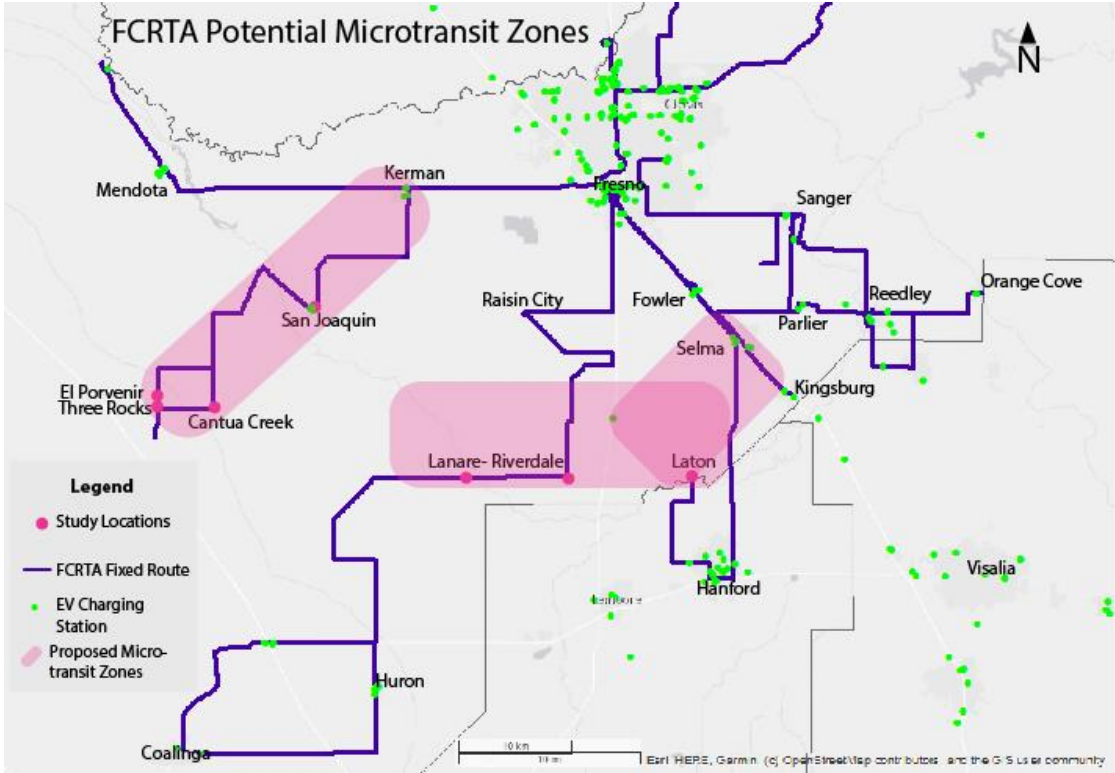
Expanded EV Microtransit Service



- Need to expand service to other parts of the County where there are gaps in service or service needs to be augmented
- Applied for RTAP grant for Laton/Lanare/Riverdale/Cantua Creek/El Porvernir Areas

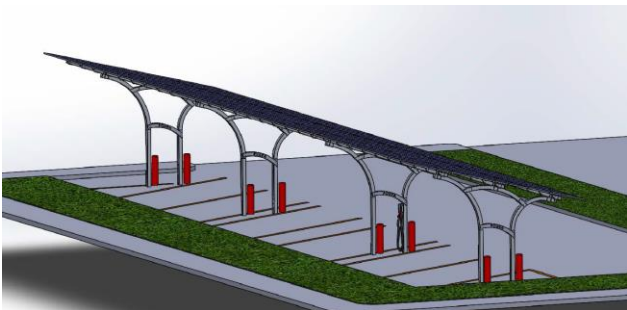


Expanded EV Microtransit Service Study Area



Upcoming Projects

- TIRCP Grant – Fresno Resiliency Hub
 - Solar Level II Charging
 - Inductive charging stations



- Selma Maintenance Facility



- SR 99 Light Rail/BRT Feasibility Study



Microgrid/Resiliency Hub Feasibility Study

What are Microgrids?

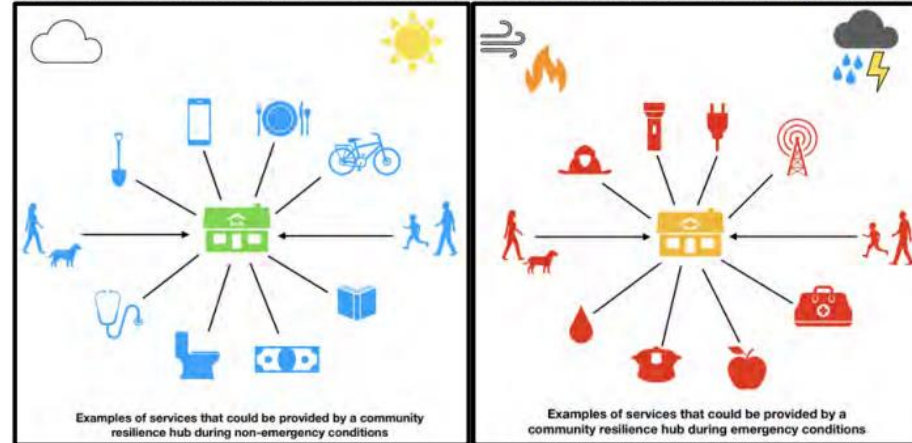
Small, independent power systems that use sustainable energy to power everything from electric buses to cell phones



Microgrid/Resiliency Hub Feasibility Study Goals

-  Increase transportation service and access
-  Redevelop vacant and underutilized land in rural areas
-  Transition to a 100% zero emissions fleet
-  Improve air quality
-  Build electric vehicle charging stations for local residents
-  Create community resiliency hubs with amenities and services
-  Provide backup power during emergencies (blackouts, wildfires)
-  Create a more resilient Fresno County!

Figure 1: Services that Could be Provided by Resilience Hub in Normal and Emergency Modes



Site Selection Activity

- Site selection brainstorm:
 - Identify criteria to develop site list
 - For example:
 - Equity
 - Transit service/routes
 - Grid capacity
 - Available land

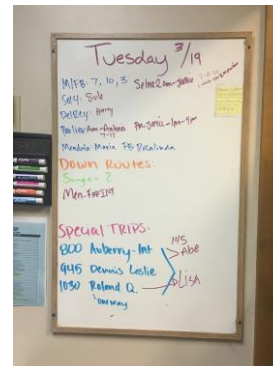
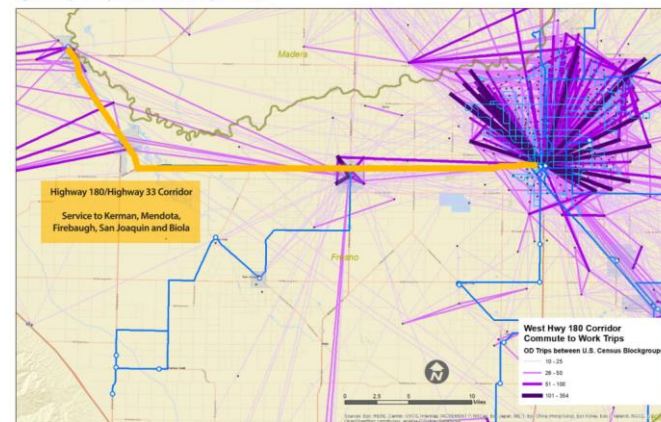
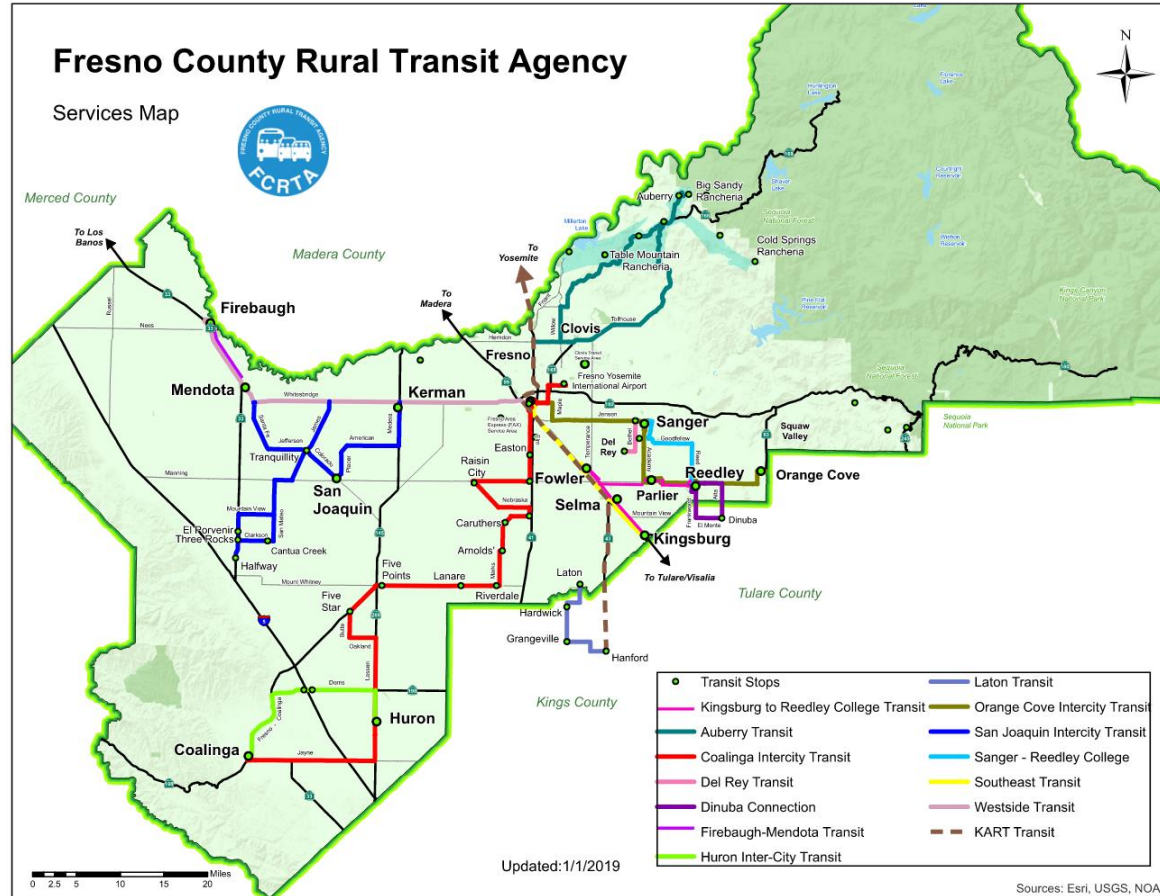


Figure 10: Hwy 180/Hwy 33 Corridor - East County Service Area



Source: Walker Consultants

Site Selection Brainstorm



Community And Stakeholder Outreach

- Study website
- Advisory Committee
 - Role of Advisory Committee
- Community survey
- Community popup events
 - Identify locations
 - Leverage existing events



Brainstorm: Community Popup Event Locations

